

TSA Surface Operations



Structured Oversight Programs

TSA Surface Operations Structured Oversight Programs

- Baseline Assessment for Security Enhancement (BASE)
- Exercise Information System (EXIS)
- Security Enhancement Through Assessment (SETA)



Baseline Assessment for Security Enhancement (BASE)

- Free and voluntary program
- Comprehensive security assessment
 - 17 Security Action Item (SAI) categories
 - SAI categories divided into ~100 specific security questions
 - Questions developed from industry standards and security best practices with input provided from industry stakeholders
- Process: Interview, Document Review, Observations
- Results
 - Executive Summary Report
 - Provides non-legally binding corrective action recommendations



Baseline Assessment for Security Enhancement (BASE)

- Supports TSA goals to:
 1. **ESTABLISH** a baseline of the surface transportation stakeholder's internal security processes, procedures and policies against industry standards and security best practices.
 2. **IDENTIFY** security program strengths and weaknesses.
 3. **ELEVATE** the surface transportation stakeholder's overall security environment through development of corrective action recommendations to mitigate any security program weaknesses detected during the review.
 4. **ENHANCE** security partnership between TSA and surface transportation stakeholders through ongoing engagement.

Exercise Information System (EXIS)

- Free and voluntary program
- Discussion-based security tabletop exercises
 - Virtual or In-person
- TSA-facilitated
- Prepares a surface transportation stakeholder to effectively respond to security incidents
- Multi-agency
- Security measures:
 - Prevention
 - Protection
 - Mitigation
 - Response
 - Recovery



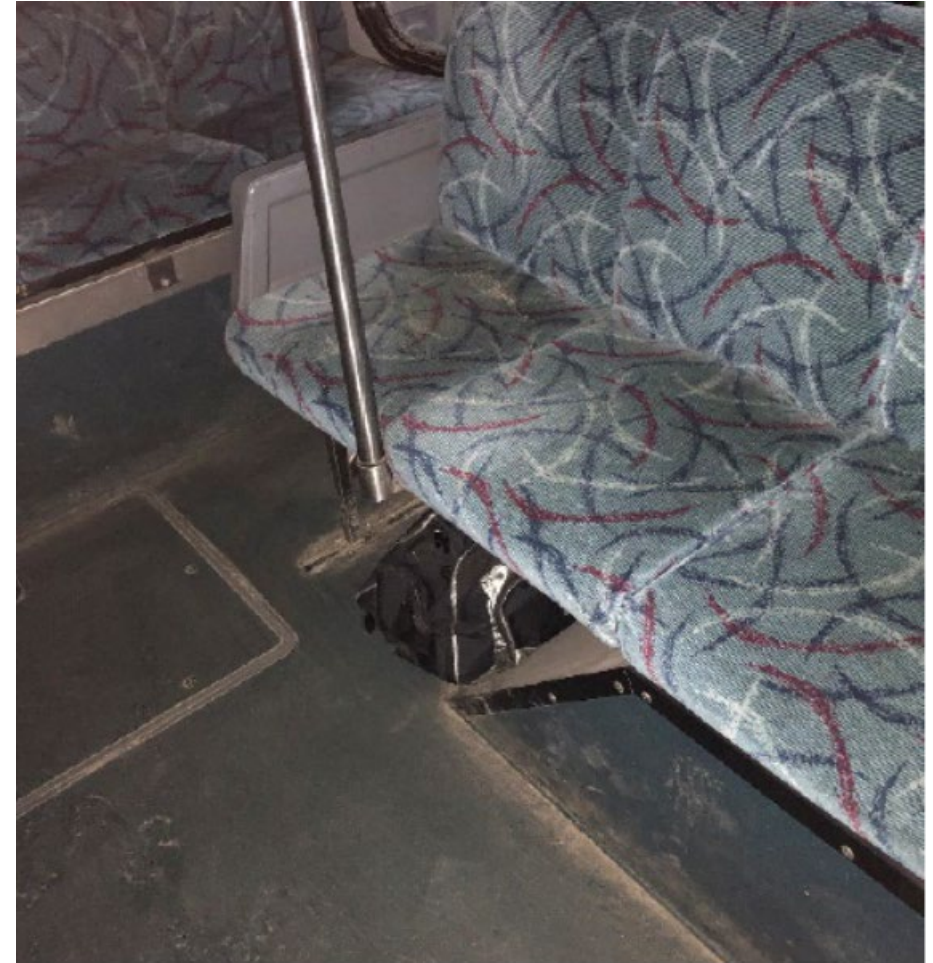
Exercise Information System (EXIS)

- EXIS Workshop
 - Small group (7 – 10 participants)
 - Single scenario
- EXIS Tabletop
 - Large group (15 – 20 participants)
 - Multi-scenario
- Results provided through an After Action Report



Security Enhancement Through Assessment (SETA)

- Free and voluntary program
- Evaluates and improves frontline employee procedures
 - Vehicle Inspection (Pre-, Mid-, Post-Trip)
 - Facility Inspection
 - Other
- Tactical level assessment
 - Unattended Bags
 - Suspicious Bags
 - Suspicious Individual



Security Enhancement Through Assessment (SETA)

- Phase I: Identify and Assess
 - Identify vulnerability
 - Initial assessment to establish a security baseline
 - Phase II: Mitigate
 - TSA-provided security briefing to frontline employees
 - Phase III: Reassess and Sustain
 - Follow-up assessment measuring programmatic changes in security posture
 - Sustainment plan to maintain an increased level of security
- *Results provided through an Executive Summary



TSA Surface Operations Structured Oversight Programs

Baseline
Assessment for
Security
Enhancement
(BASE)

- **Strategic Level**

- Assessment of security policies and procedures

Exercise
Information
System (EXIS)

- **Operational Level**

- TSA-facilitated, stakeholder-specific security tabletop exercise
- TSA-provided security training

Security
Enhancement
Through
Assessment
(SETA)

- **Tactical Level**

- Collaborative front line employee assessment

Mass Transit Training Resources

- Formal Training
 - First Observer Plus™ general security awareness training
 - Explosive Hazard Recognition and Safety Awareness
- Familiarization Briefings
 - TSA Mass Transit and Passenger Rail Threat Assessment
 - Vehicle Security Inspections
 - Recognizing and Responding to Unattended and Suspicious Items
 - Identifying and Responding to Suspicious Behavior



A TRANSPORTATION SECURITY PROGRAM

First Observer Plus™ Hotline:
844-TSA-FRST (844-872-3778)
www.tsa.gov/for-industry/firstobserver

Questions

Brooke Boesch

Transportation Security Inspector

612-716-7482

Brooke.Boesch@tsa.dhs.gov

