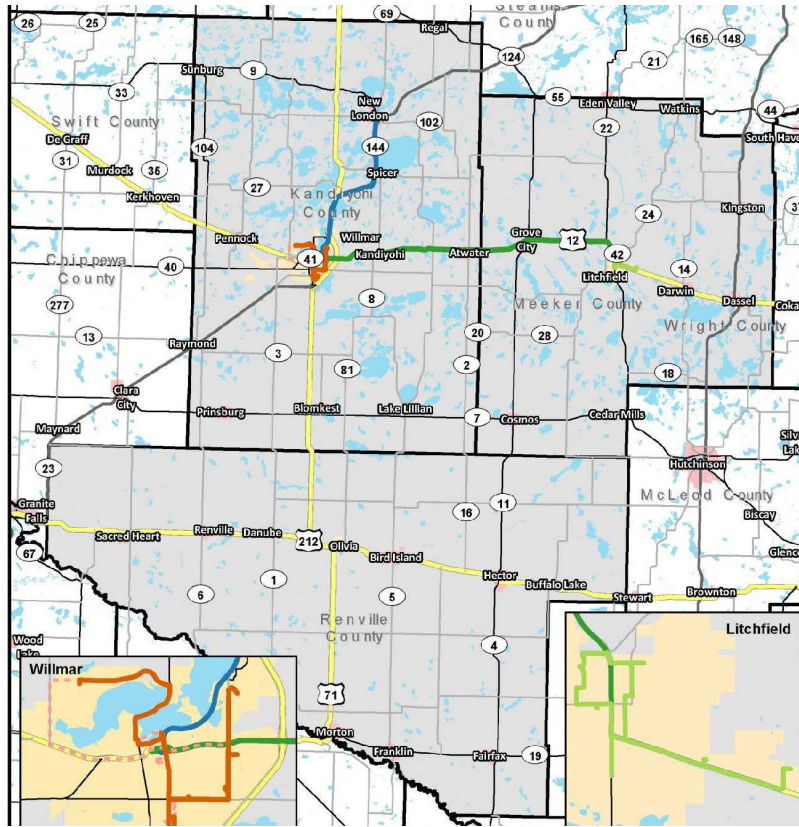


Central Community Transit

Central Community Transit (CCT) operates dial-a-ride demand response service in and around the cities of Willmar, Olivia, and Litchfield, and throughout the outlying portions of Kandiyohi, Renville, and Meeker counties. CCT operates a deviated route service between Litchfield, Willmar, and New London/Spicer. Deviated routes operate in the city of Willmar and the City of Litchfield.



Tiffany Collins, Transit Director
1320 22nd Street SW P.O. Box 186
Willmar, MN 56201
320-214-7433
tcollins@cctbus.org
www.cctbus.org

Legislative Districts: 16B, 17A, 17B, 18A, 18
Congressional District: 7

Volunteer Drivers

An estimated 14,439 annual hours have been donated, covering 22,094 trips and 721,932 miles driven. The MnDOT affiliated volunteer driver program was terminated in July 2018. The current volunteer driver program is through the Title III Program and receives funding through Title III. In addition, this program continues to provide non-emergency medical transportation through contracts with County Human Services, Blue Ride, UCARE, Medica, and others.

Hours of Operation

Monday–Friday: 5:30 AM–5:30 PM (8:00 PM Litchfield and 9:30 PM Willmar)
Saturday: 8:30 AM–4:30 PM
Sunday: 8:30 AM–4:30 PM

CCT has 32 buses, 31 of which are active. Each active revenue vehicle is equipped with dispatching tablets, a handicapped lift, and onboard cameras.

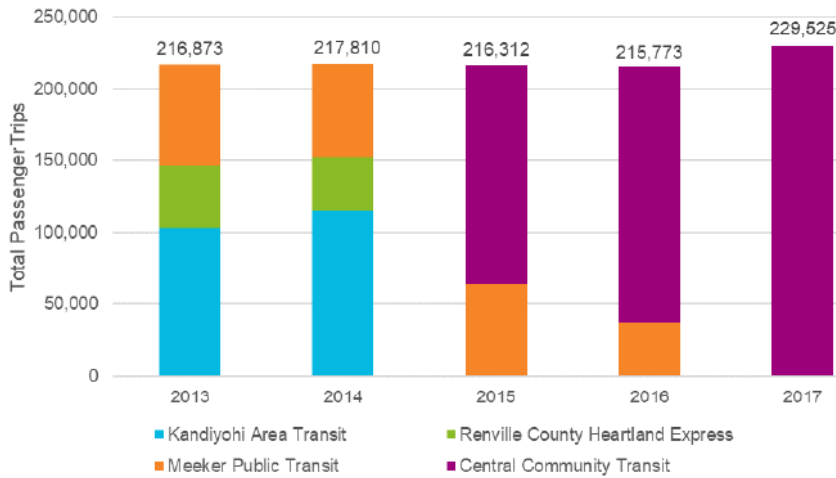
CCT has three garage facilities: one in Olivia housing 5 vehicles, one in Litchfield housing 14 vehicles, and one in Willmar housing 11 vehicles. CCT has 25 signed bus stops, 10 benches and 2 bus shelters.

Ridership

Overall, total system-wide public passenger trips have incrementally increased each year since 2013. The largest increase to date has been an increase of over 14,000 trips from 2016 to 2017, due to the addition of Meeker County and the City of Litchfield to the CCT service area. Total public passenger trips are anticipated to continue to grow through 2019.

CCT serves passengers of all ages and abilities. About a quarter of all passenger trips are made by disabled passengers. While the number of disabled passengers declined from 2015 to 2016, the number of passengers has risen since 2016 to a projected 61,167 in 2018. By age group, most passengers are adults, making up about 47% of all passenger trips, followed by elderly passengers, children, and students. The number of passengers in all age groups has generally increased over time.

Figure 1. System-Wide Ridership (2013-2017)



Budget

In 2019, CCT had an operating budget of approximately \$3.4 million.

Federal Revenue Share	\$718,095
State Revenue Share	\$2,242,455
Local Revenue Share	\$522,450

CCT has capital needs totaling \$3 million between 2020 and 2025. A new transit facility adds an additional \$2.7 million to the capital budget. CCT’s operating budget will need to increase to \$5.1 million by 2025 to meet the identified needs. To maintain existing service, CCT’s budget will need to grow to \$4 million by 2025.

High and Medium Priority Unconstrained Needs List for CCT

Figure 2. High Priority Unconstrained Needs for CCT

